



Notice to Mariners Amendments to buoyage at Kentish Flats, Britned Crossing and Gunfleet Sands

Date of Notice	28 th June 2012
----------------	----------------------------

Please promulgate the following as a notice to mariners:

Change of buoyage

Following buoyage has been amended due to the ongoing wind farm construction work in the Thames Estuary:

A North Cardinal buoy has been installed in the following position:

- Lat 51° 28.718'N., Long 001° 17.500'E (named: BRIT North) with North Cardinal topmark and exhibiting a Q light character.

The buoy marks the North most extension of the rock placements where the London Array Export cables cross the BritNet cable and the consequently reduced charted depth.

A South Cardinal buoy has been installed in the following position:

- 51° 24.860'N., Long 001° 05.770'E with a South Cardinal topmark and exhibiting a Q (6) + L Fl 15s light character.

This buoy replaces the special mark in the same position. The buoy marks the Southernmost extension of the rock placements where the London Array Export cables cross the Kentish Flats cables and the consequently reduced charted depth. The three other special marks in the area remain unchanged.

The GFS-WF5 (Fl G 5s) buoy

This buoy has been moved to the following position:

- Lat 51° 41.953'N., Long 001° 11.703'E

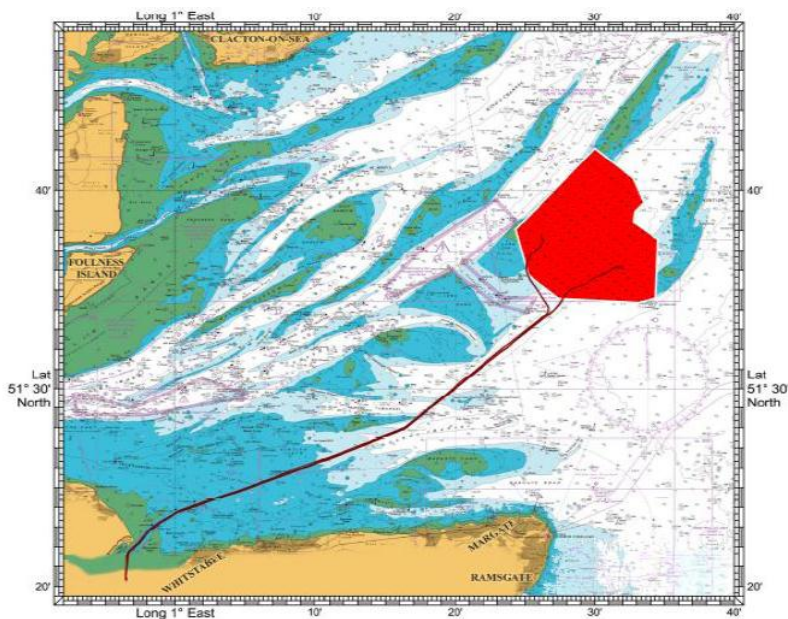
The change of buoyage is due to the commencement of the two turbine Gunfleet Demo Offshore Wind Farm. The GFS-WF5 buoy is now located off the SW corner of the construction site.

Any costs for the promulgation of this notice should be forwarded to:

London Array Limited
 Construction Management
 Port of Ramsgate
 Military Road
 Ramsgate
 Kent CT11 9LG

The construction of the London Array Wind Farm (Phase I) consisting of 175 wind turbines and 2 offshore sub stations commenced February 2011, and is scheduled to be completed by December 2012

Site overview: The construction zone boundary is unmarked and is delineated in UK Hydrographic Office preliminary Notice to Mariners No.0849/2011



Construction Zone Boundary		
ID	Latitude	Longitude
1	51° 38.03' N	001° 24.60' E
2	51° 38.06' N	001° 25.33' E
3	51° 38.82' N	001° 26.47' E
4	51° 39.05' N	001° 26.05' E
5	51° 41.90' N	001° 30.04' E
6	51° 40.52' N	001° 33.00' E
7	51° 39.65' N	001° 32.88' E
8	51° 39.42' N	001° 33.30' E
9	51° 38.61' N	001° 32.16' E
10	51° 37.45' N	001° 34.29' E
11	51° 34.90' N	001° 33.71' E
12	51° 34.68' N	001° 34.14' E
13	51° 34.50' N	001° 33.14' E
14	51° 34.71' N	001° 27.46' E
15	51° 35.82' N	001° 25.40' E
16	51° 38.03' N	001° 24.60' E

A guard vessel is in place at the offshore construction site - the vessel can be contacted at all times on VHF channel 16

Any Question regarding this Notice to Mariners should be directed to London Array Marine Coordinators Office

Notice Issued by :

Marine Coordinator
 London Array Ltd.

Email : londonarraytraffic@dongenergy.dk
 Phone : +44 (0) 7920854358
 Web site : www.londonarray.com